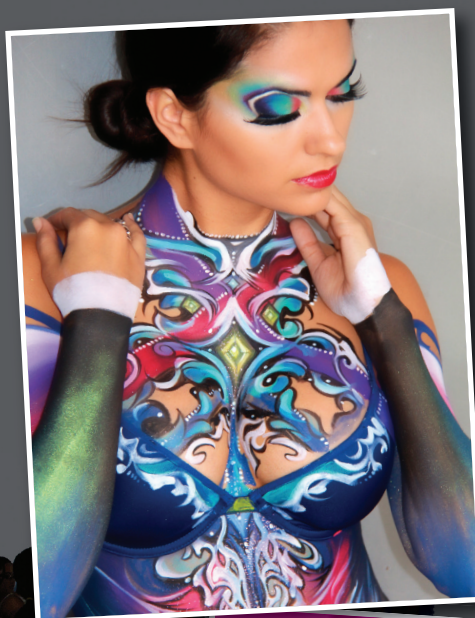


How does it work?

Hold the pump bottle at least 14 inches from the skin. Three sprays across the face is sufficient for adults. For children, have them hold their eyes closed with their fingers, or cover them with plastic spoons. Barrier Spray can then be sprayed on over the eyelids.



Introducing... Barrier Spray Fixer & Sealer

The Makeup Sealer for all types of makeup applications.

From the stage, to the catwalk, on camera, under heavy lights and everyday wear, keep your makeup looking perfect and fresh all day!



From our inception over 9 decades ago in the heart of Broadway, Mehron brands have been at the forefront in setting a standard of excellence in performance makeup. Mehron makeup is a familiar and well-respected brand used by performers and makeup artists world-wide. Mehron is the oldest family owned makeup manufacturer in America and we take great pride in our history. Our state-of-the-art products continue to meet our customer's needs.

100 Red Schoolhouse Rd.
Chestnut Ridge, NY 10977
www.mehron.com



www.mehron.com



An indispensable aid for almost any makeup application...

Barrier Spray is a clear, alcohol-based, cosmetic grade film that is designed to create a barrier between the skin and the makeup. When applied to clean, dry skin it reduces sweating from behind the makeup and provides protection from allergic reactions to makeup, latex and adhesives like spirit gum. It allows the makeup to be applied evenly and retards staining from pigments. Best of all, after the makeup application it can be used as the final seal for the finished makeup too!



Barrier Spray is available in:

- 1 oz. Pump Bottle
- 2 oz. Pump Bottle
- 9 oz. Refill Bottle
- 1 Gallon Refill

Face Painters are applying Barrier Spray on the face to protect from staining and over the design to protect it from rubbing off.

Clowns are using Barrier Spray under their makeup to prevent makeup from soaking in the skin, therefore allowing an even application. After powdering down, they are using it to set the makeup, remove the powder haze and pop the color back out.

Actors are using it to keep from sweating through their makeup and as a sealer so their makeup lasts longer on stage and under the hot lights. It can be used over water-based makeup and over cream makeup once it has been powdered.

Costumers encourage their customers to use Barrier Spray anywhere the costume comes in contact with the makeup. It can be applied on the makeup and the costume to minimize the makeup from rubbing off onto costumes. Barrier Spray works great for quick changes in performances and when changing the skin tone of an actor warrants applying makeup on hands and neck.

At Halloween, people like to use Barrier Spray under latex applications to keep from having allergic reactions to glues and latex prosthetics. It also prolongs the use of 3D Gel effects as it insulates the 3D Gel from moisture and the rise in body temperature.

Mascots are applying Barrier Spray to reduce sweating while under the mascot headpiece.

Wedding Parties are using it to keep the bride's makeup fresh and flawless throughout the special day, even while crying.

Tattoo Cover is enhanced by using Barrier Spray on the skin first to prevent any absorption into the skin and to set Tattoo Cover after it has been powdered. Barrier Spray will maximize the water-resistant qualities of the Tattoo Cover and minimize rub-off onto clothing.



Makeup Artists
are calling it the
"Wonder Spray"



mehron™

